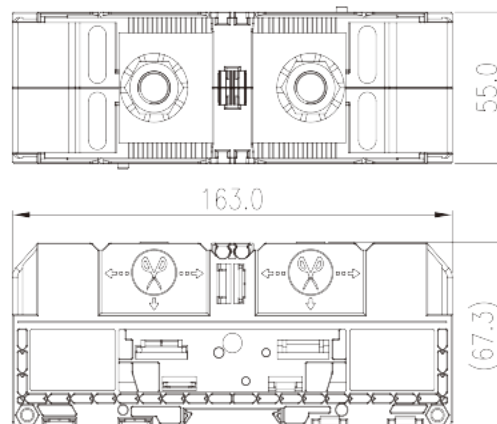
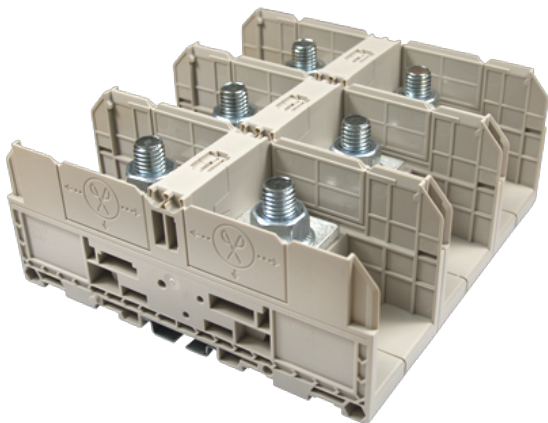


# DKM240

DIN Rail Terminal Blocks > Stud Connection

Date:2024-02-16



The web catalog is for reference only. Dinkle remains the right of product modification and engineering change of the design. The final product is made according to engineering drawing.

## Product Description

M12, 1500V, 460A, Beige (default)

## General information

Short description	Panel Mounting/DIN Rail terminal blocks, Stud Connection
Category	Feed-through Single Level
Pitch (mm)	55
Color	Refer to drawing
Connection method	Stud Connection
Type of locking	Panel Mounting/Rail Mounting
Length (mm)	163
Width (mm)	55
Height (mm)	67
Level	Single level
Connection points	2

## Material information

Insulation material	PA
Insulation material group	I

Flame retardant rating , compliant with UL94	V0
Insulation resistance	□500MΩ at DC 500V

## Connection data-IEC

Rated voltage (V)	1500
Rated current (A)	415
Rated voltage (III/3)(V)	1500
Rated impulse voltage (III/3)(KV)	8
Conductor cross section solid. min (mm <sup>2</sup> )	10
Conductor cross section solid.max (mm <sup>2</sup> )	240
Conductor cross section stranded. min (mm <sup>2</sup> )	10
Conductor cross section stranded. max (mm <sup>2</sup> )	240
Screw thread	M12
Rated torque (N.m)	14~31
Recommend tightening torque. min (N.m)	14
Recommend tightening torque. max (N.m)	31
Stripping Length (mm)	The stripping length depends on the specification provided by the cablelug manufacturer
Mounting rail	TS-35
End cover plate required	NO
Grounding connections	NO

## Connection data-UL

Rated voltage (UL/CUL Group E)(V)	1500
Rated current (UL/CUL Group E)(A)	*Single Cable 380A / Double Cable 460A
Min. solid wire connection (AWG) acc. to UL/CUL	8
Max. solid wire connection AWG acc. to UL/CUL	500(kcmil)
Min. stranded wire connection AWG acc. to UL/CUL	8
Max. stranded wire connection AWG acc. to UL/CUL	500(kcmil)

## Environment & Safety

Back of the hand protection (YES or NO)	NO
Finger protection (YES or NO)	NO
Operating temperature. max (°C)	120
Operating temperature. min (°C)	-40

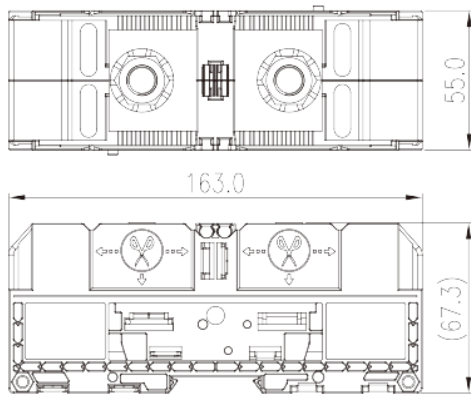
## UL Recognized

Wire Range (Group E)(AWG)	8~500(kcmil)
Rated voltage (Group E)(V)	1500
Rated current (Group E)(A)	*Single Cable 380A / Double Cable 460A

## CUL Recognized

Wire Range (Group E)(AWG)	8~500(kcmil)
Rated voltage (Group E)(V)	1500
Rated current (Group E)(A)	*Single Cable 380A / Double Cable 460A

## Drawings



## Approvals

